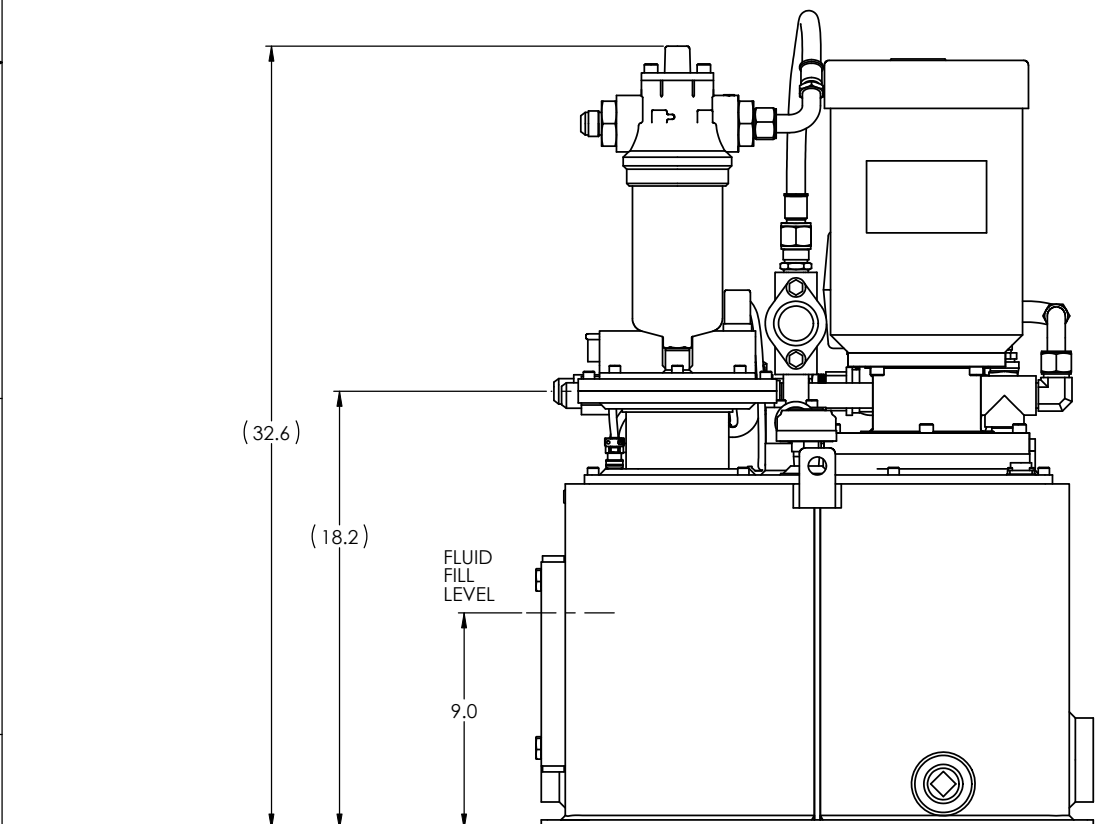
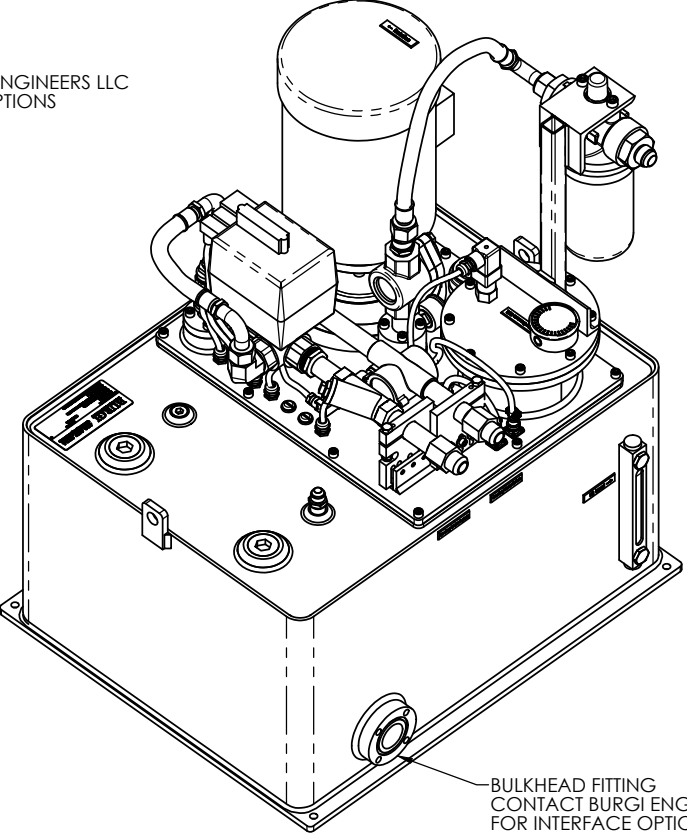
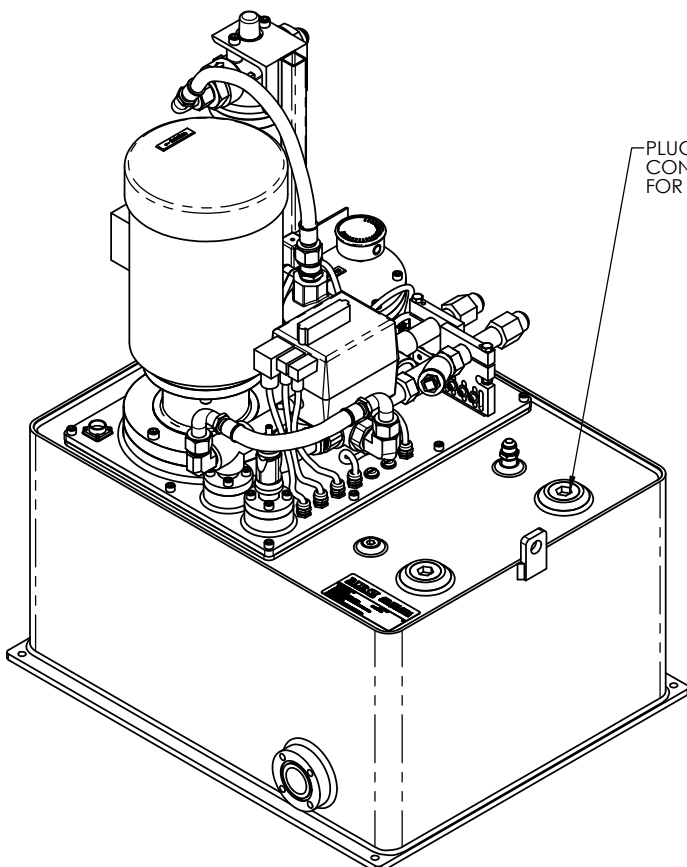
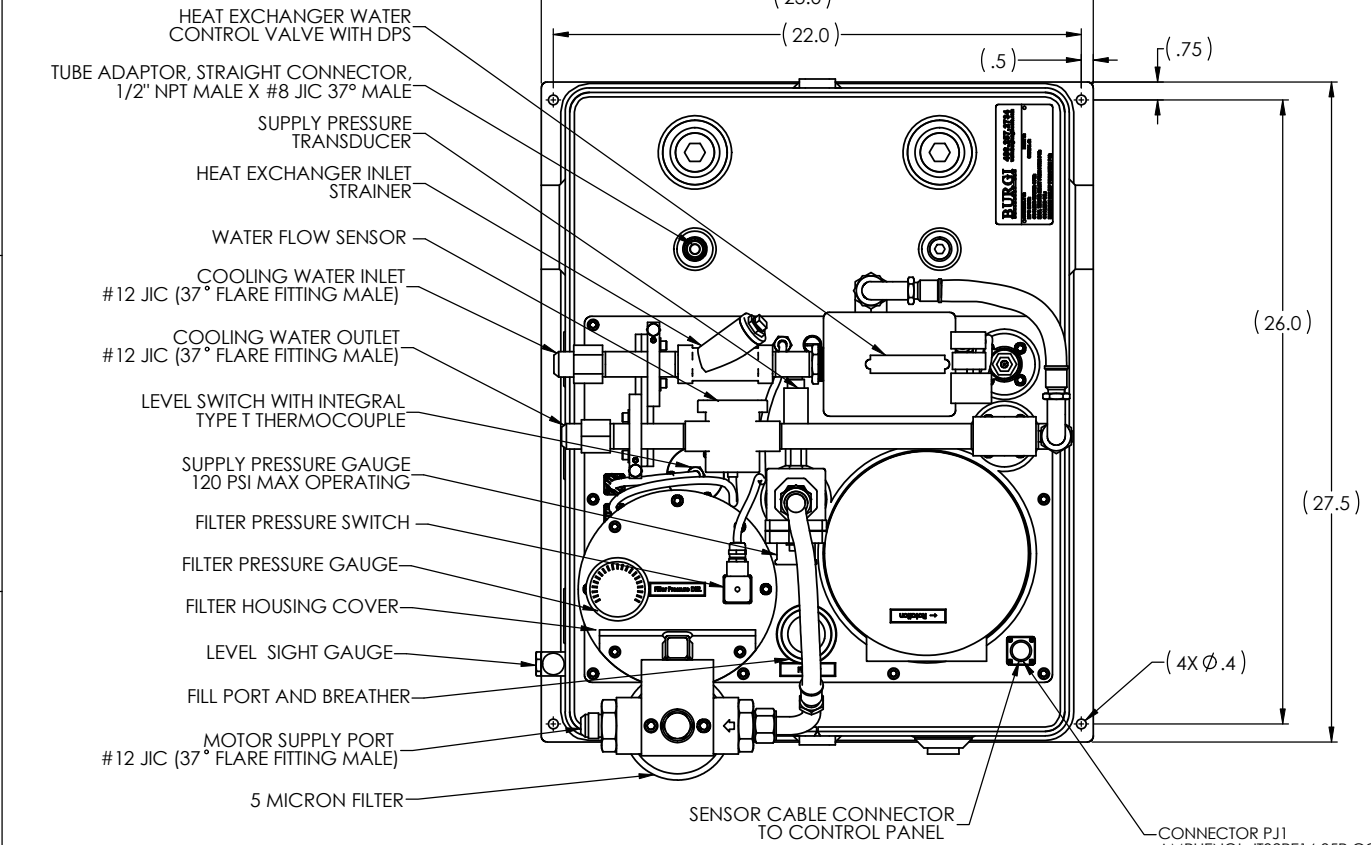
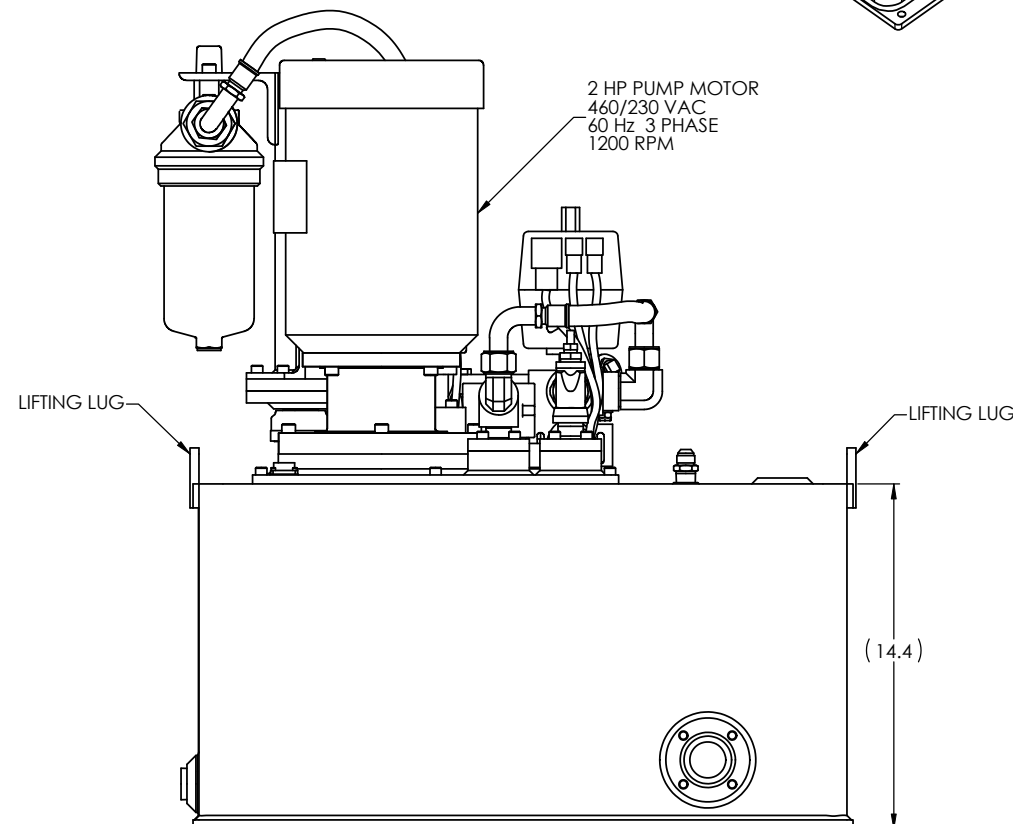


THE INFORMATION CONTAINED IN THIS DRAWING IS THE SOLE PROPERTY OF BURGI ENGINEERS, LLC. ANY REPRODUCTION IN PART OR WHOLE WITHOUT THE WRITTEN PERMISSION OF BURGI ENGINEERS, LLC IS PROHIBITED.

REVISIONS				
ZONE	REV.	DESCRIPTION	DATE	APPROVED
	A	CORRECTED LANGUAGE ON SENSOR OUTPUT	9/24/12	MJS



- CONNECTOR P11  
 AMPHENOL JT02RE14-35P CONNECTOR FOR COOLING SYSTEM SENSOR AND 24VDC VALVE INTERFACE. MATING PLUG (AMPHENOL JT06RE-14-35S (SR)) (WIRE GAUGE 18 -22)
- PIN 01 -- HEAT EXCHANGER WATER CONTROL VALVE 24 VDC COMMON R1
  - PIN 02 -- HEAT EXCHANGER WATER CONTROL VALVE 24 VDC + B1
  - PIN 03 -- NOT USED
  - PIN 04 -- HEAT EXCHANGER WATER CONTROL VALVE GROUND R2
  - PIN 05 -- NOT USED
  - PIN 06 -- WATER CONTROL VALVE POSITION SENSOR 24 VDC + B2
  - PIN 07 -- WATER CONTROL VALVE POSITION SENSOR FEEDBACK (CLOSED) R3
  - PIN 08 -- WATER CONTROL VALVE POSITION SENSOR FEEDBACK (OPEN) B3
  - PIN 09 -- WATER CONTROL VALVE POSITION SENSOR CABLE SHIELD GROUND R4
  - PIN 10 -- LEVEL SWITCH AND THERMOCOUPLE CABLE SHIELD GROUND B4
  - PIN 11 -- RESERVOIR LOW LEVEL SWITCH (NO) 24 VDC+ R5
  - PIN 12 -- RESERVOIR LOW LEVEL SWITCH (NO) B5
  - PIN 13 -- RESERVOIR HIGH LEVEL SWITCH (NC) 24 VDC+ R6
  - PIN 14 -- RESERVOIR HIGH LEVEL SWITCH (NC) B6
  - PIN 15 -- T TYPE THERMOCOUPLE + B7
  - PIN 16 -- T TYPE THERMOCOUPLE - R7
  - PIN 17 -- CABLE SHIELD GROUND
  - PIN 18 -- NOT USED
  - PIN 19 -- WATER FLOW SENSOR 24 VDC + R8
  - PIN 20 -- WATER FLOW SENSOR GROUND B8
  - PIN 21 -- WATER FLOW SENSOR ANALOG OUTPUT 0-10VDC 1A MAX R9
  - PIN 22 -- NOT USED
  - PIN 23 -- SUPPLY PRESSURE TRANSDUCER ANALOG OUTPUT 4-20 mA B9
  - PIN 24 -- SUPPLY PRESSURE TRANSDUCER 24 VDC+ R10
  - PIN 25 -- SUPPLY PRESSURE TRANSDUCER GROUND B10
  - PIN 26 -- PRESSURE TRANSDUCER CABLE SHIELD GROUND R11
  - PIN 27 -- FILTER PRESSURE CABLE SHIELD GROUND B11
  - PIN 28 -- FILTER PRESSURE SWITCH (NO) R12
  - PIN 29 -- FILTER PRESSURE SWITCH (NO) 24 VDC + B12
  - PIN 30 -- NOT USED R13
  - PIN 31 -- WATER CONTROL VALVE DPS (4-20mA) OUTPUT B13
  - PIN 32 -- WATER CONTROL VALVE DPS 24VDC + R14
  - PIN 33 -- WATER CONTROL VALVE DPS (4-20mA) FEEDBACK B14
  - PIN 34 -- WATER CONTROL VALVE DPS CABLE SHIELD GROUND R15
  - PIN 35 -- NOT USED B15
  - PIN 36 -- NOT USED R16
  - PIN 37 -- NOT USED B16

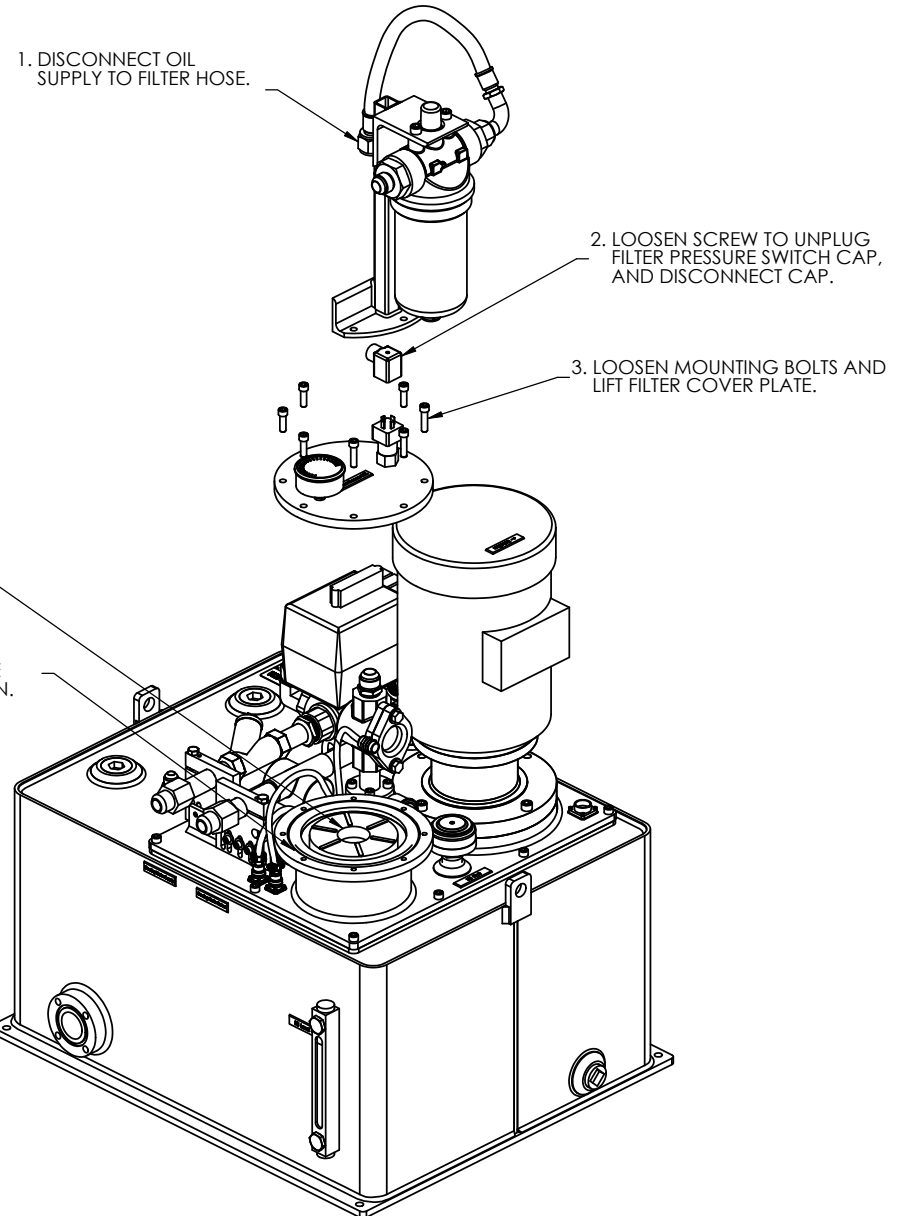


- NOTES:**
1. COOLING SYSTEM FLUID SCHEMATIC NUMBER A6100027.
  2. COOLING SYSTEM BOM NUMBER A6500040.
  3. RESERVOIR CAPACITY = 20 GALLONS
  4. INTEGRAL TYPE T THERMOCOUPLE MUST BE MONITORED, SYSTEM MUST BE SHUT DOWN IF OIL TEMPERATURE EXCEEDS 150°F
  5. NOISE LEVEL: 68 DBA

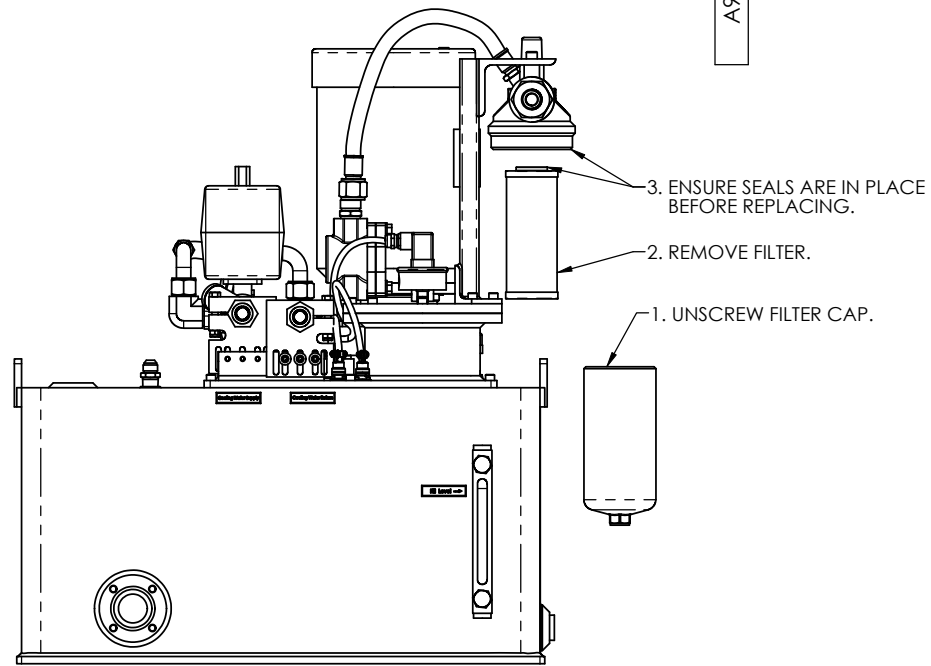
UNLESS OTHERWISE SPECIFIED DIMENSIONS ARE IN INCHES TOLERANCES ARE:		CAD GENERATED DRAWING. DO NOT MANUALLY UPDATE		BURGI ENGINEERS, LLC KALISPELL, MONTANA	
FRACTIONS ± 1/64" ANGLES ± 0°30'		APPROVALS	DATE	7 GPM SUPPLY, SIDE PORT RETURN OIL RECIRCULATING SYSTEM	
.X ± .015 .XX ± .010 .XXX ± .005		DRAWN	MJS 9/5/2012		
KWY WIDTH +.002 -.000		CHECKED	DJB 9/28/2012		
		APPR	RCB 9/28/2012		
PATTERN NUMBER: -- DO NOT SCALE DRAWING	SEE BOM	MATERIAL		SIZE DWG. NO. D 1:4 A9610013	REV. A
				SCALE 1:4 CAD FILE: A9610013	SHT 1 OF 2

THE INFORMATION CONTAINED IN THIS DRAWING IS THE SOLE PROPERTY OF BURGI ENGINEERS, LLC. ANY REPRODUCTION IN PART OR WHOLE WITHOUT THE WRITTEN PERMISSION OF BURGI ENGINEERS, LLC IS PROHIBITED.

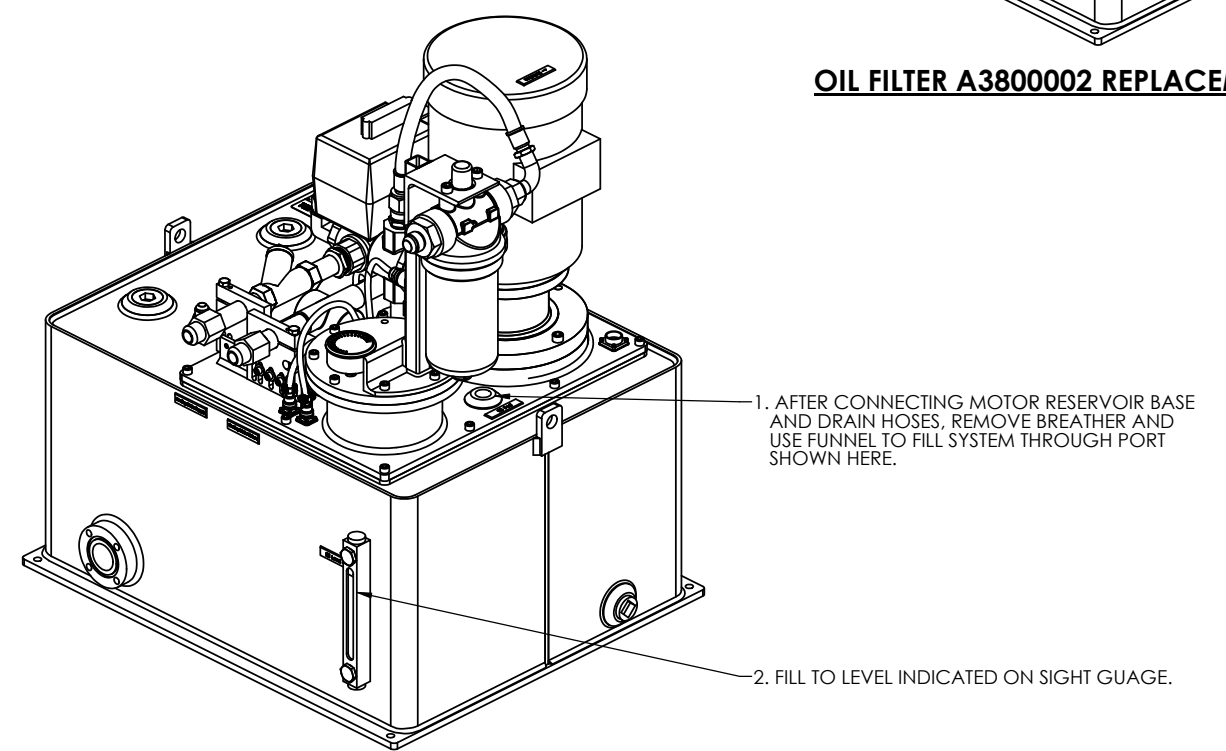
REV. NO.		REVISIONS DESCRIPTION	DATE	APPROVED



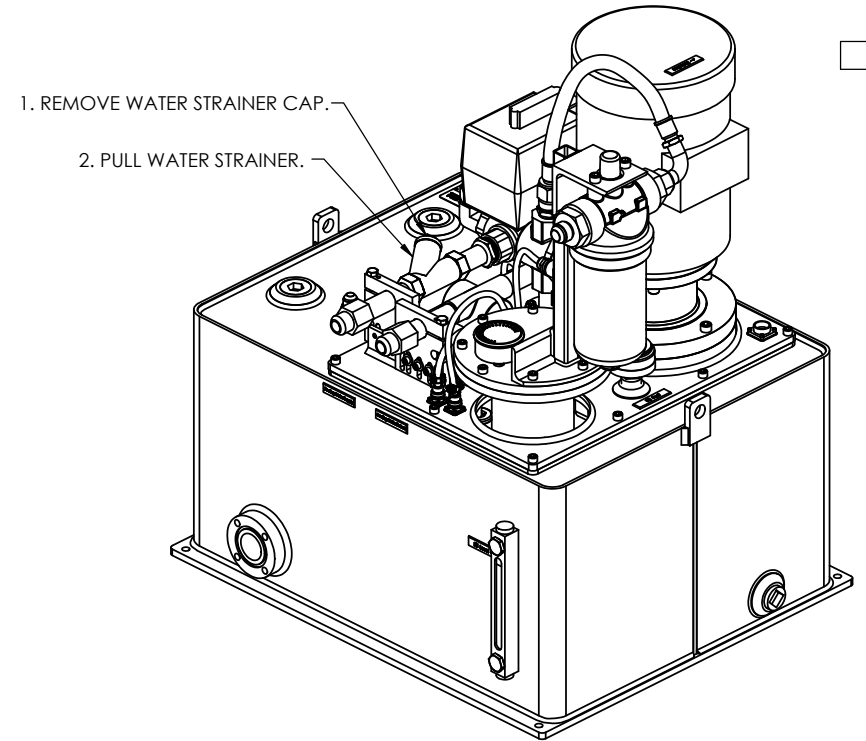
**OIL FILTER A380002 REPLACEMENT**



**SUPPLY FILTER A380010-03 REPLACEMENT**



**RESERVOIR FILL PROCEDURE**



**WATER STRAINER A4500106-01 REPLACEMENT**

**SERVICE INSTRUCTIONS**

PART # A9610013 SHOWN  
APPROXIMATE WEIGHT IS 484 LBS.

UNLESS OTHERWISE SPECIFIED DIMENSIONS ARE IN INCHES TOLERANCES ARE:	CAD GENERATED DRAWING. DO NOT MANUALLY UPDATE		BURGI ENGINEERS, LLC KALISPELL, MONTANA	
	APPROVALS	DATE	7 GPM SUPPLY, SIDE PORT RETURN OIL RECIRCULATING SYSTEM	
FRACTIONS ± 1/64"	DRAWN	MJS	9/5/2012	SIZE DWG. NO. A9610013 REV. A
ANGLES ± 0°30'	CHECKED	DJB	9/28/2012	
.X ± .015 .XX ± .010 .XXX ± .005	APPR	RCB	9/28/2012	
KWY WIDTH +.002 -.000	MATERIAL	SEE BOM		SCALE 1:5 CAD FILE: SHT 2 OF 2
PATTERN NUMBER: --	DO NOT SCALE DRAWING			