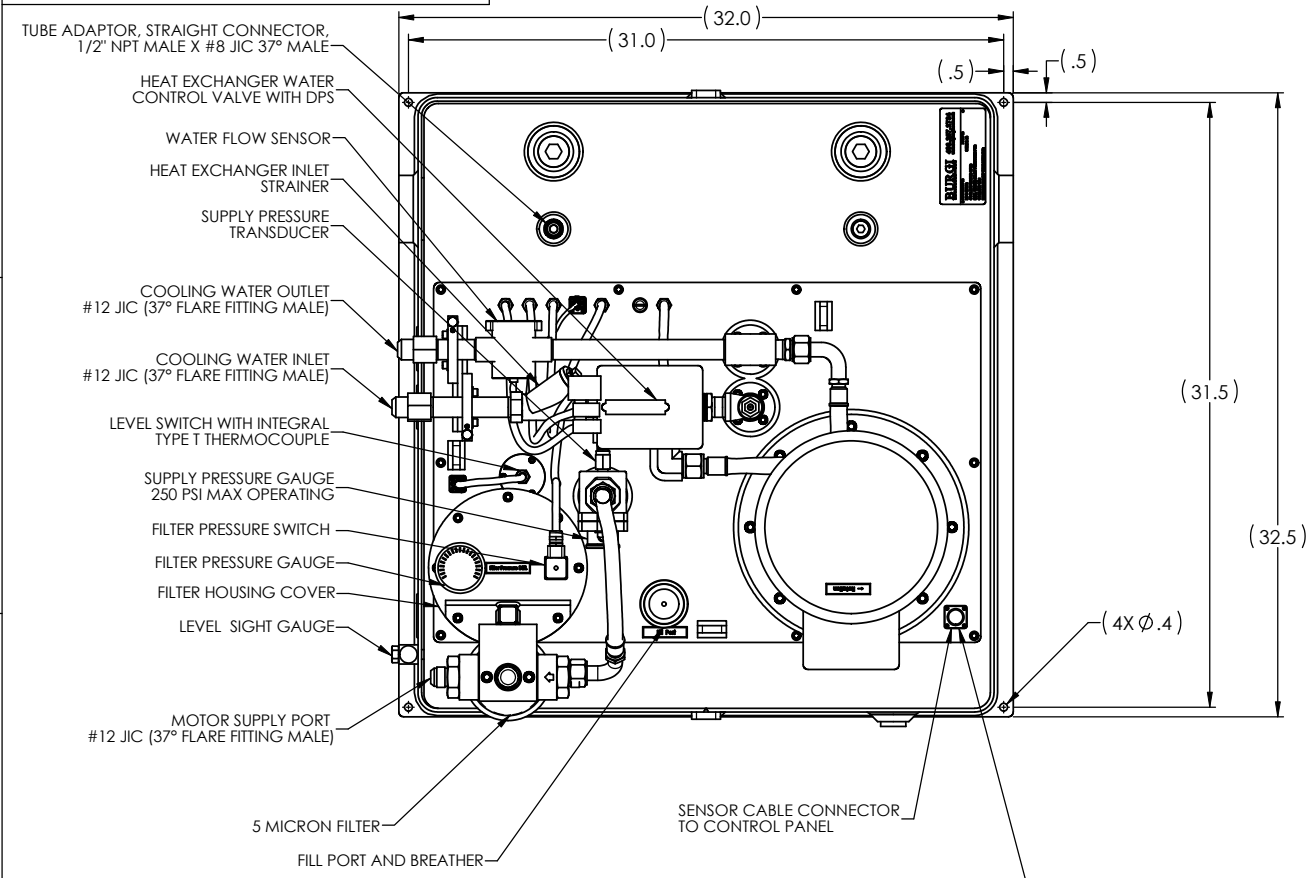
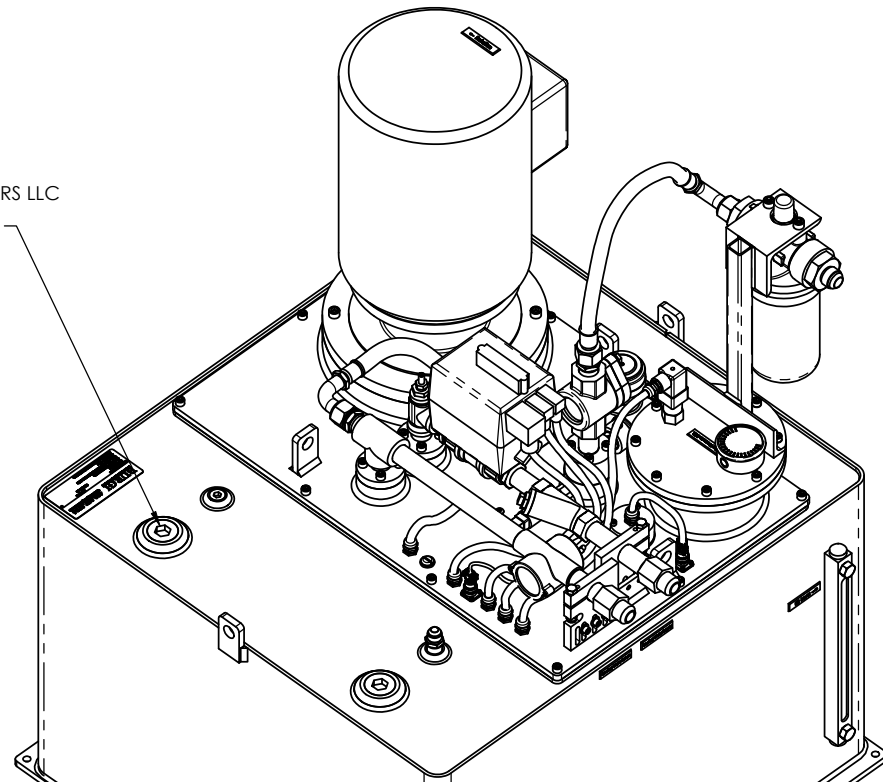


THE INFORMATION CONTAINED IN THIS DRAWING IS THE SOLE PROPERTY OF BURGI ENGINEERS, LLC. ANY REPRODUCTION IN PART OR WHOLE WITHOUT THE WRITTEN PERMISSION OF BURGI ENGINEERS, LLC IS PROHIBITED.

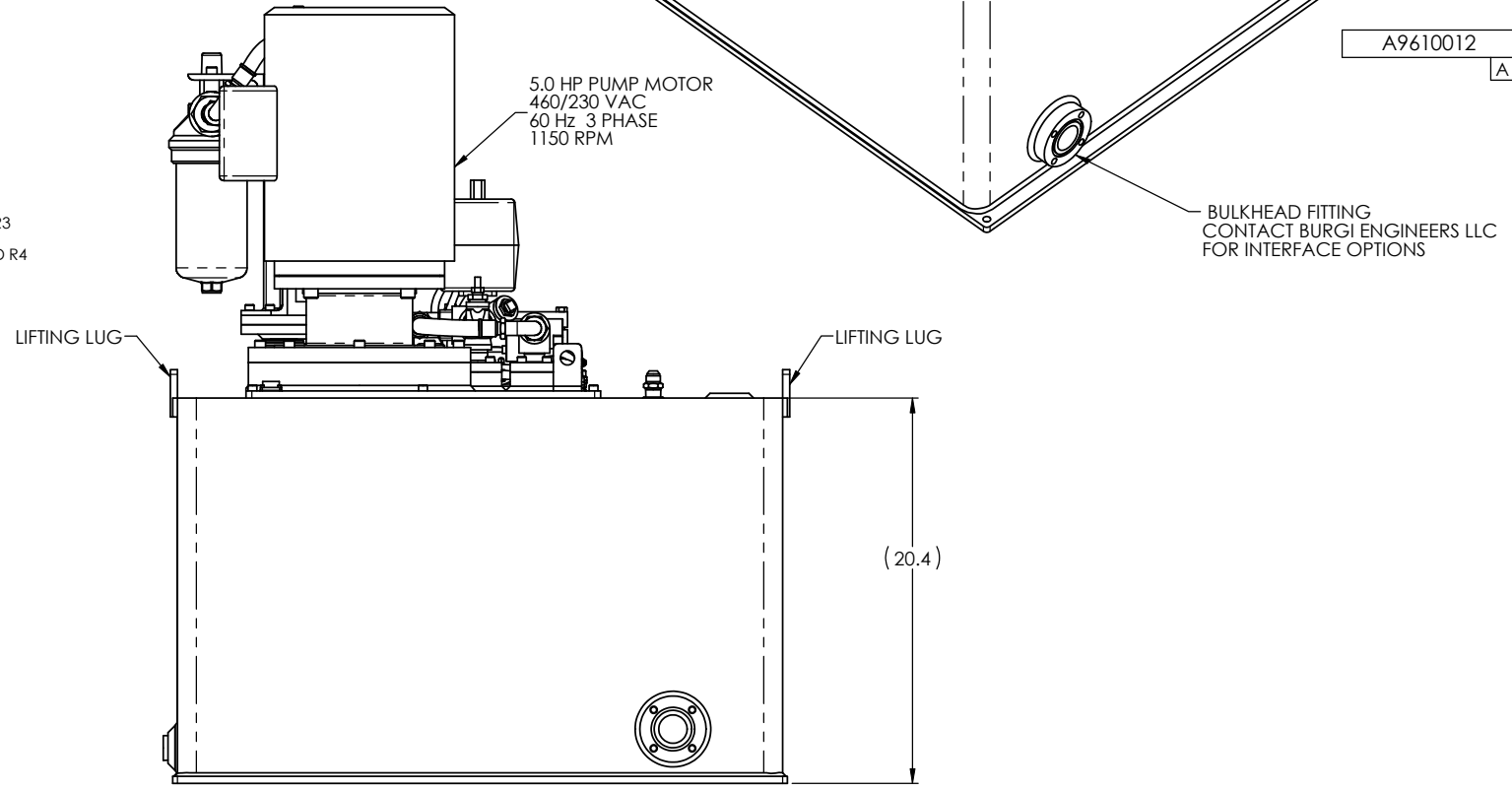
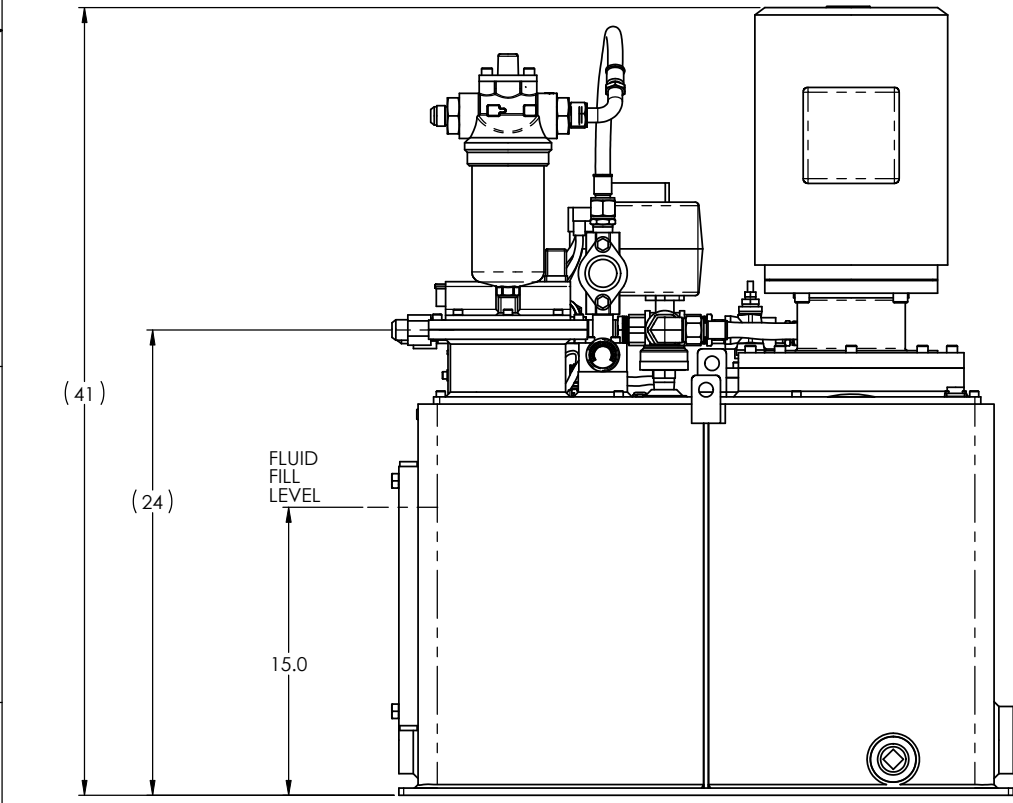
REVISIONS				
ZONE	REV.	DESCRIPTION	DATE	APPROVED
A	1	REDESIGNED, ADDED DETAIL	10/3/12	MJS



PLUGS 1-1/4" NPT CONTACT BURGI ENGINEERS LLC FOR INTERFACE OPTIONS



- CONNECTOR PJ1 AMPHENOL JT02RE14-35P CONNECTOR FOR COOLING SYSTEM SENSOR AND 24VDC VALVE INTERFACE. MATING PLUG (AMPHENOL JT06RE-14-35S (SR)) (WIRE GAUGE 18 -22)
- PIN 01 --- HEAT EXCHANGER WATER CONTROL VALVE 24 VDC COMMON R1
 - PIN 02 --- HEAT EXCHANGER WATER CONTROL VALVE 24 VDC + B1
 - PIN 03 --- NOT USED
 - PIN 04 --- HEAT EXCHANGER WATER CONTROL VALVE GROUND R2
 - PIN 05 --- NOT USED
 - PIN 06 --- WATER CONTROL VALVE POSITION SENSOR 24 VDC + B2
 - PIN 07 --- WATER CONTROL VALVE POSITION SENSOR FEEDBACK (CLOSED) R3
 - PIN 08 --- WATER CONTROL VALVE POSITION SENSOR FEEDBACK (OPEN) B3
 - PIN 09 --- WATER CONTROL VALVE POSITION SENSOR CABLE SHIELD GROUND R4
 - PIN 10 --- LEVEL SWITCH AND THERMOCOUPLE CABLE SHIELD GROUND B4
 - PIN 11 --- RESERVOIR LOW LEVEL SWITCH (NO) 24 VDC+ R5
 - PIN 12 --- RESERVOIR LOW LEVEL SWITCH (NO) B5
 - PIN 13 --- RESERVOIR HIGH LEVEL SWITCH (NC) 24 VDC+ R6
 - PIN 14 --- RESERVOIR HIGH LEVEL SWITCH (NC) B6
 - PIN 15 --- T TYPE THERMOCOUPLE + B7
 - PIN 16 --- T TYPE THERMOCOUPLE - R7
 - PIN 17 --- CABLE SHIELD GROUND
 - PIN 18 --- NOT USED
 - PIN 19 --- WATER FLOW SENSOR 24 VDC + R8
 - PIN 20 --- WATER FLOW SENSOR GROUND B8
 - PIN 21 --- WATER FLOW SENSOR ANALOG OUTPUT 0-10VDC 1A MAX R9
 - PIN 22 --- NOT USED
 - PIN 23 --- SUPPLY PRESSURE TRANSDUCER ANALOG OUTPUT 4-20 mA B9
 - PIN 24 --- SUPPLY PRESSURE TRANSDUCER 24 VDC+ R10
 - PIN 25 --- SUPPLY PRESSURE TRANSDUCER GROUND B10
 - PIN 26 --- PRESSURE TRANSDUCER CABLE SHIELD GROUND R11
 - PIN 27 --- FILTER PRESSURE CABLE SHIELD GROUND B11
 - PIN 28 --- FILTER PRESSURE SWITCH (NO) R12
 - PIN 29 --- FILTER PRESSURE SWITCH (NO) 24 VDC + B12
 - PIN 30 --- NOT USED R13
 - PIN 31 --- WATER CONTROL VALVE DPS (4-20mA) OUTPUT B13
 - PIN 32 --- WATER CONTROL VALVE DPS 24VDC + R14
 - PIN 33 --- WATER CONTROL VALVE DPS (4-20mA) FEEDBACK B14
 - PIN 34 --- WATER CONTROL VALVE DPS CABLE SHIELD GROUND R15
 - PIN 35 --- NOT USED B15
 - PIN 36 --- NOT USED R16
 - PIN 37 --- NOT USED B16

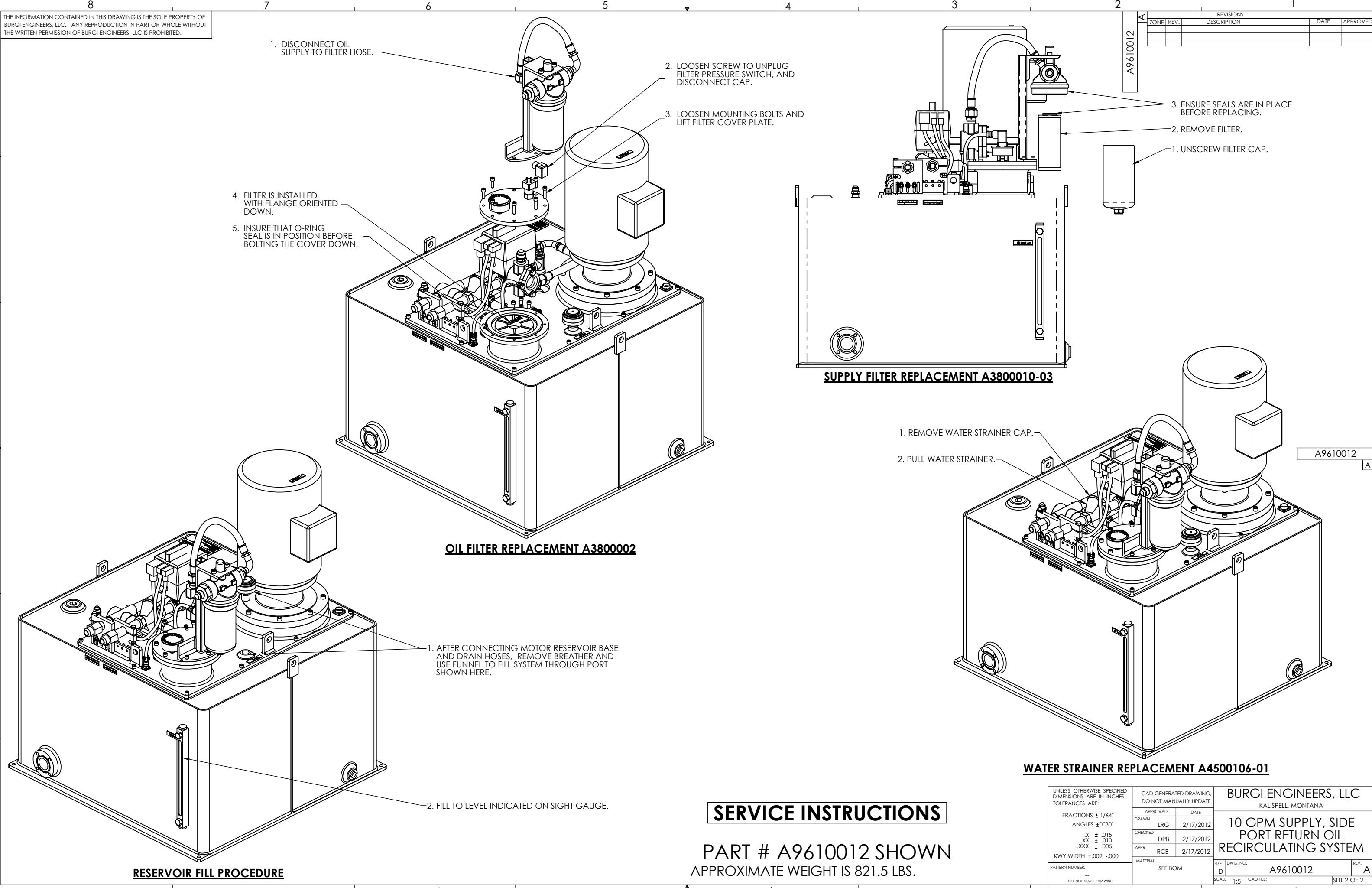


- NOTES:**
1. COOLING SYSTEM FLUID SCHEMATIC NUMBER A61000026.
 2. COOLING SYSTEM BOM NUMBER A6500035
 3. RESERVOIR CAPACITY = 60 GALLONS
 4. INTEGRAL TYPE T THERMOCOUPLE MUST BE MONITORED. SYSTEM MUST BE SHUT DOWN IF OIL TEMPERATURE EXCEEDS 150°F
 5. NOISE LEVEL: 68 DBA

UNLESS OTHERWISE SPECIFIED DIMENSIONS ARE IN INCHES TOLERANCES ARE:		CAD GENERATED DRAWING. DO NOT MANUALLY UPDATE		BURGI ENGINEERS, LLC KALISPELL, MONTANA	
FRACTIONS ± 1/64" ANGLES ± 0°30'		APPROVALS	DATE	10 GPM SUPPLY, SIDE PORT RETURN OIL RECIRCULATING SYSTEM	
.X ± .015 .XX ± .010 .XXX ± .005		DRAWN	2/17/2012	A9610012	
KWY WIDTH +.002 -.000		CHECKED	2/17/2012	REV. A	
PATTERN NUMBER: -- DO NOT SCALE DRAWING		APPR	2/17/2012	SCALE 1:5	CAD FILE: 1
		MATERIAL	SEE BOM	SHT 1 OF 2	

THE INFORMATION CONTAINED IN THIS DRAWING IS THE SOLE PROPERTY OF BURGI ENGINEERS, LLC. ANY REPRODUCTION IN PART OR WHOLE WITHOUT THE WRITTEN PERMISSION OF BURGI ENGINEERS, LLC IS PROHIBITED.

REVISIONS				
ZONE	REV.	DESCRIPTION	DATE	APPROVED



1. DISCONNECT OIL SUPPLY TO FILTER HOSE.
2. LOOSEN SCREW TO UNPLUG FILTER PRESSURE SWITCH, AND DISCONNECT CAP.
3. LOOSEN MOUNTING BOLTS AND LIFT FILTER COVER PLATE.

4. FILTER IS INSTALLED WITH FLANGE ORIENTED DOWN.
5. INSURE THAT O-RING SEAL IS IN POSITION BEFORE BOLTING THE COVER DOWN.

1. UNSCREW FILTER CAP.
2. REMOVE FILTER.
3. ENSURE SEALS ARE IN PLACE BEFORE REPLACING.

OIL FILTER REPLACEMENT A3800002

SUPPLY FILTER REPLACEMENT A3800010-03

1. REMOVE WATER STRAINER CAP.
2. PULL WATER STRAINER.

WATER STRAINER REPLACEMENT A4500106-01

1. AFTER CONNECTING MOTOR RESERVOIR BASE AND DRAIN HOSES, REMOVE BREATHER AND USE FUNNEL TO FILL SYSTEM THROUGH PORT SHOWN HERE.

2. FILL TO LEVEL INDICATED ON SIGHT GAUGE.

RESERVOIR FILL PROCEDURE

SERVICE INSTRUCTIONS

PART # A9610012 SHOWN
APPROXIMATE WEIGHT IS 821.5 LBS.

UNLESS OTHERWISE SPECIFIED DIMENSIONS ARE IN INCHES TOLERANCES ARE: FRACTIONS ± 1/64" ANGLES ± 0°30' .X ± .015 .XX ± .010 .XXX ± .005 KWY WIDTH +.002 -.000 PATTERN NUMBER: -- DO NOT SCALE DRAWING	CAD GENERATED DRAWING. DO NOT MANUALLY UPDATE		BURGI ENGINEERS, LLC KALISPELL, MONTANA	
	APPROVALS	DATE	10 GPM SUPPLY, SIDE PORT RETURN OIL RECIRCULATING SYSTEM	
	DRAWN	LRG 2/17/2012		
	CHECKED	DPB 2/17/2012		
APPR	RCB 2/17/2012	MATERIAL	SEE BOM	SIZE DWG. NO. A9610012 SCALE 1:5 CAD FILE: SHT 2 OF 2