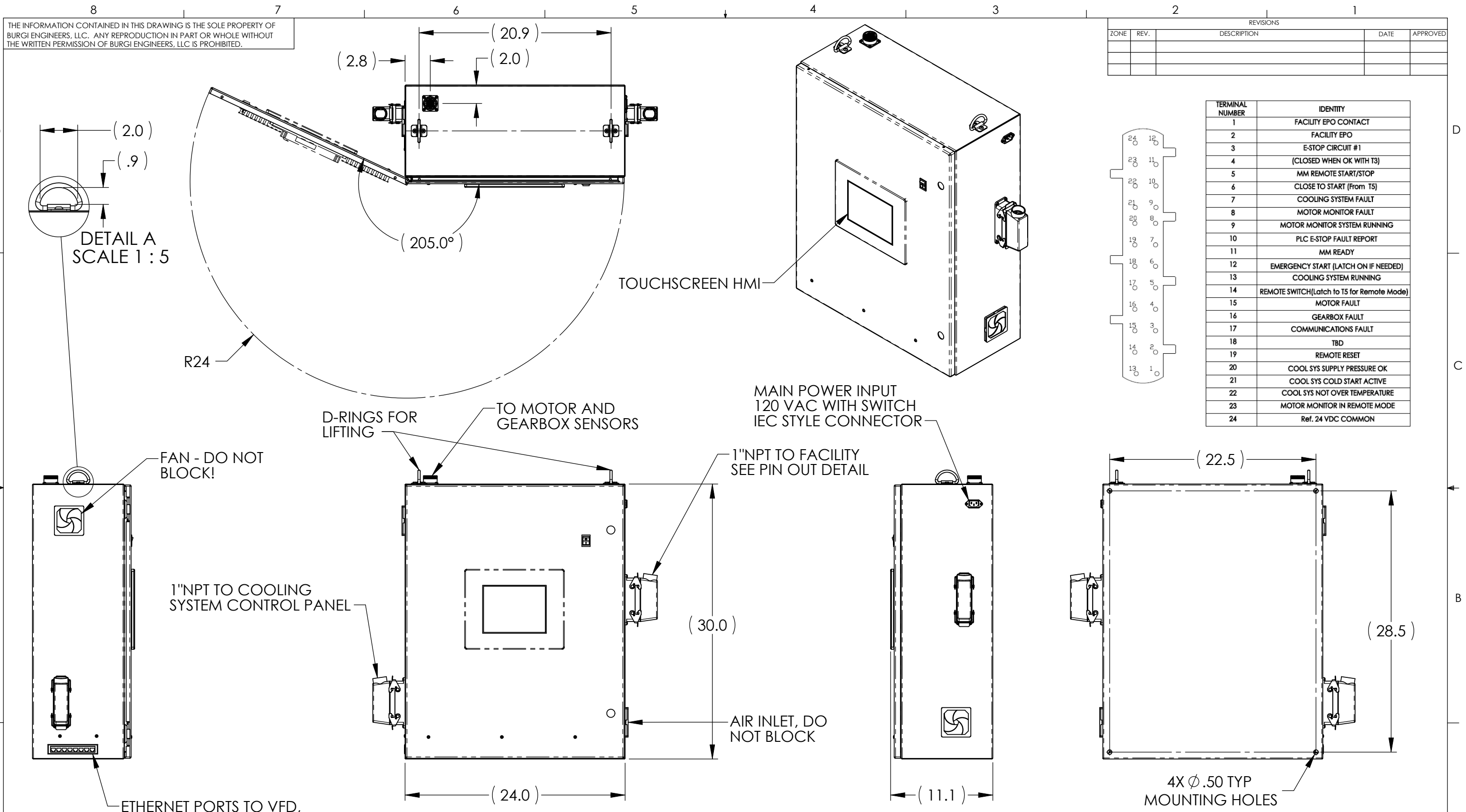
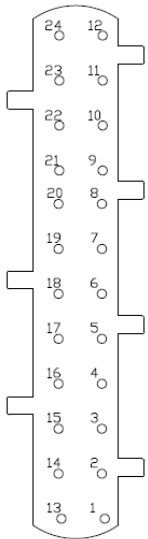


THE INFORMATION CONTAINED IN THIS DRAWING IS THE SOLE PROPERTY OF BURGI ENGINEERS, LLC. ANY REPRODUCTION IN PART OR WHOLE WITHOUT THE WRITTEN PERMISSION OF BURGI ENGINEERS, LLC IS PROHIBITED.

REVISIONS				
ZONE	REV.	DESCRIPTION	DATE	APPROVED

TERMINAL NUMBER	IDENTITY
1	FACILITY EPO CONTACT
2	FACILITY EPO
3	E-STOP CIRCUIT #1
4	(CLOSED WHEN OK WITH T3)
5	MM REMOTE START/STOP
6	CLOSE TO START (From T5)
7	COOLING SYSTEM FAULT
8	MOTOR MONITOR FAULT
9	MOTOR MONITOR SYSTEM RUNNING
10	PLC E-STOP FAULT REPORT
11	MM READY
12	EMERGENCY START (LATCH ON IF NEEDED)
13	COOLING SYSTEM RUNNING
14	REMOTE SWITCH(Latch to T5 for Remote Mode)
15	MOTOR FAULT
16	GEARBOX FAULT
17	COMMUNICATIONS FAULT
18	TBD
19	REMOTE RESET
20	COOL SYS SUPPLY PRESSURE OK
21	COOL SYS COLD START ACTIVE
22	COOL SYS NOT OVER TEMPERATURE
23	MOTOR MONITOR IN REMOTE MODE
24	Ref. 24 VDC COMMON



- NOTES:
- ELECTRICAL SCHEMATIC: A6200047
  - COLOR: ANSI 61 GREY

PART # A9400029 SHOWN  
APPROXIMATE WEIGHT IS 41.2 LBS.

UNLESS OTHERWISE SPECIFIED DIMENSIONS ARE IN INCHES TOLERANCES ARE: FRACTIONS ± 1/64" ANGLES ± 0°30' .X ± .015 .XX ± .010 .XXX ± .005 K/WY WIDTH +.002 -.000 PATTERN NUMBER: -- DO NOT SCALE DRAWING	CAD GENERATED DRAWING, DO NOT MANUALLY UPDATE		<b>BURGI ENGINEERS, LLC</b> KALISPELL, MONTANA	
	APPROVALS DRAWN TLG CHECKED DPB APPR RCB	DATE 2/17/2012 2/17/2012 2/17/2012		
	MATERIAL SEE BOM	SIZE B	DWG. NO. A9400029	REV. -
	SCALE 1:10	WEIGHT	SHT 1 OF 1	SHT 1 OF 1