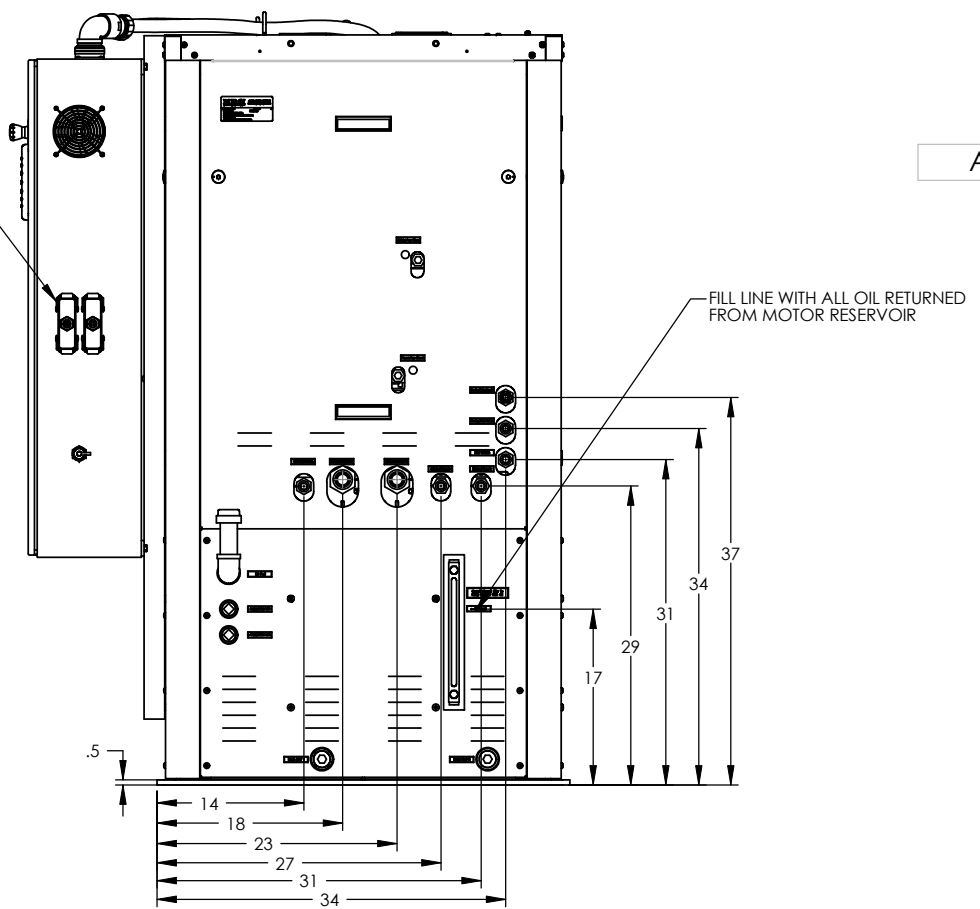
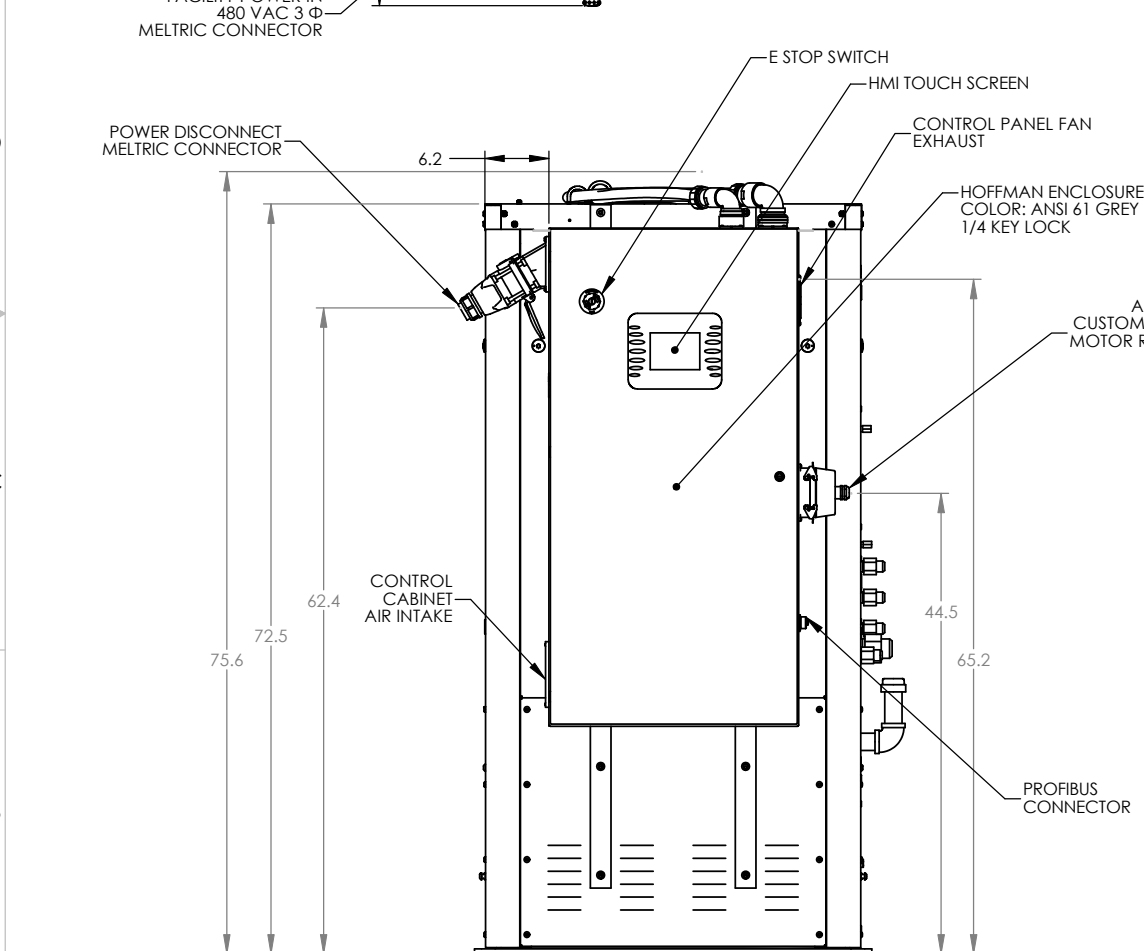
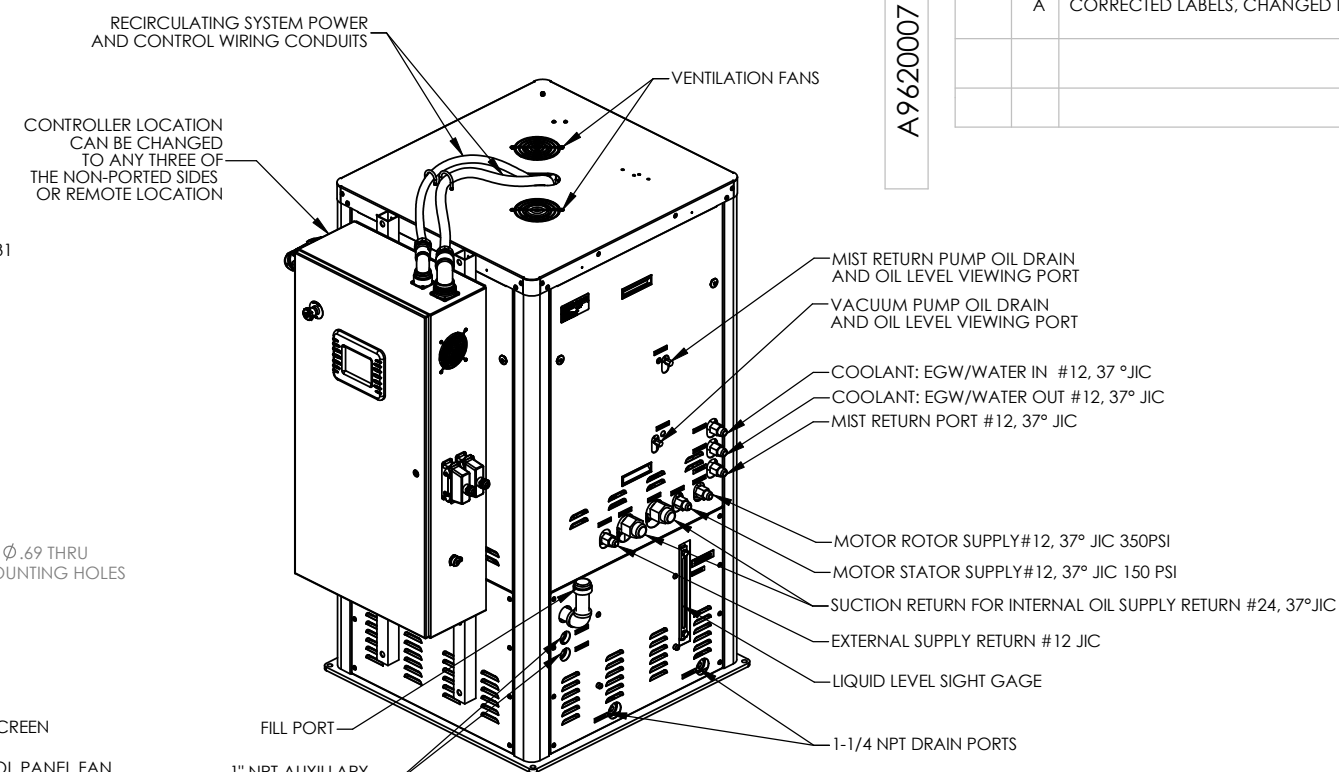
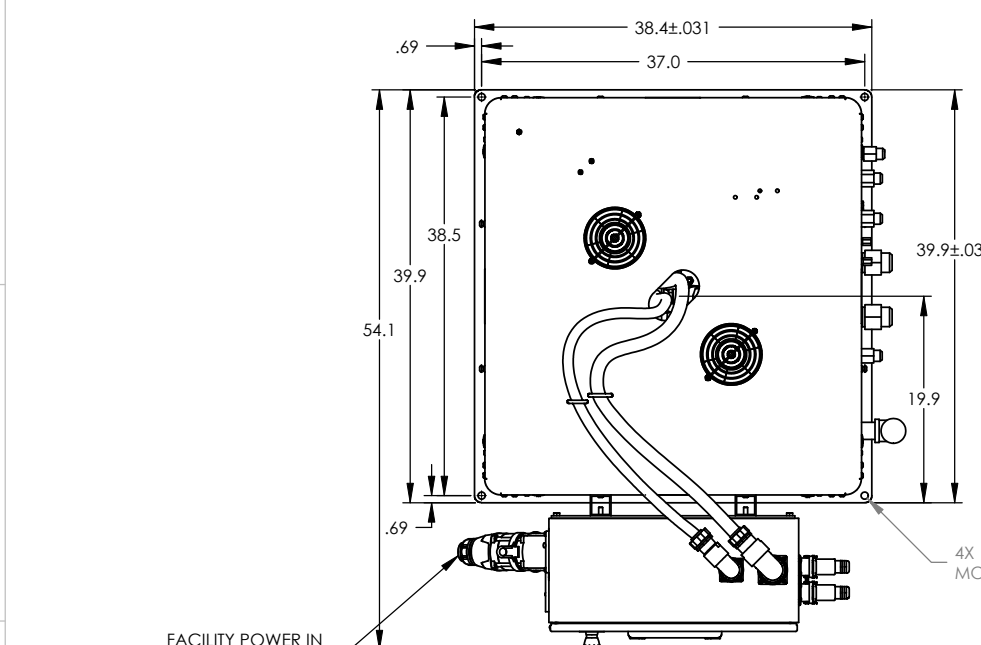


THE INFORMATION CONTAINED IN THIS DRAWING IS THE SOLE PROPERTY OF BURGI ENGINEERS, LLC. ANY REPRODUCTION IN PART OR WHOLE WITHOUT THE WRITTEN PERMISSION OF BURGI ENGINEERS, LLC IS PROHIBITED.

REVISIONS				
ZONE	REV.	DESCRIPTION	DATE	APPROVED
	A	CORRECTED LABELS, CHANGED DESCRIPTION	10/29/12	DJB



NOTES:

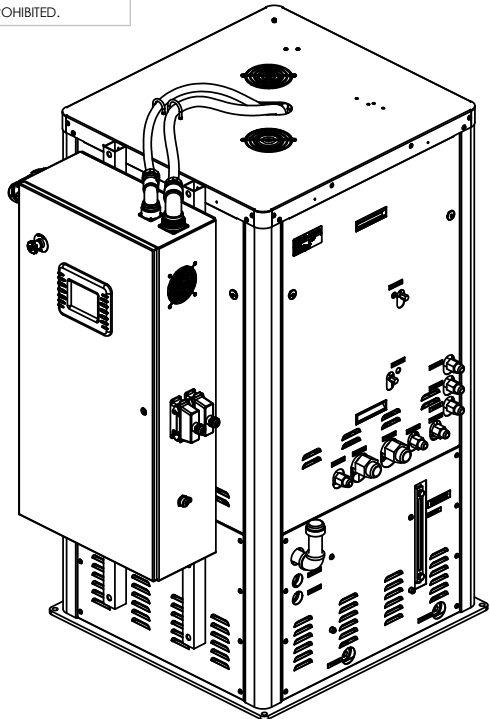
- USE MOBIL 1 SYNTHETIC ATF. RESEVIOR CAPACITY = 75 GALLONS.
- SUPPLY PORTS ARE PRESSURE RELIEVED; 350 PSI INTERNAL SUPPLY AND 150 EXTERNAL SUPPLY.
- SUPPLY PORTS FLOW: 11 GPM INTERNAL SUPPLY AND 14 GPM EXTERNAL SUPPLY @ 60 HZ INPUT.
- SUCTION RETURN PORTS DRAW WITH MAXIMUM VACUUM OF 28 IN HG.
- ELECTRICAL: INPUT VOLTAGE IS 480 VAC +5%/-10% 60 HZ. PHASE-TO-PHASE IMBALANCE IS NOT TO EXCEED 5%
TOTAL NOMINAL AMP DRAW IS 35.6 AMPS. UNIT IS TO BE PROVIDED WITH PROPER GROUNDING.
- TOTAL WEIGHT WITHOUT FLUID 2250 LBS.
- FLUID SCHEMATIC NUMBER: A6100019
- ELECTRICAL SCHEMATIC NUMBER: A6200031
- MECHANICAL BOM NUMBER: A6500022
- ELECTRICAL BOM NUMBER: A6400012
- DO NOT BLOCK CONTROL CABINET AIR INTAKE.
- UNIT IS DESIGN FOR EITHER 50Hz OR 60Hz OPERATION.
- MAX NOISE LEVEL: 85 DBA

ALL DIMENSIONS ON THIS DRAWING ARE REFERENCE ONLY

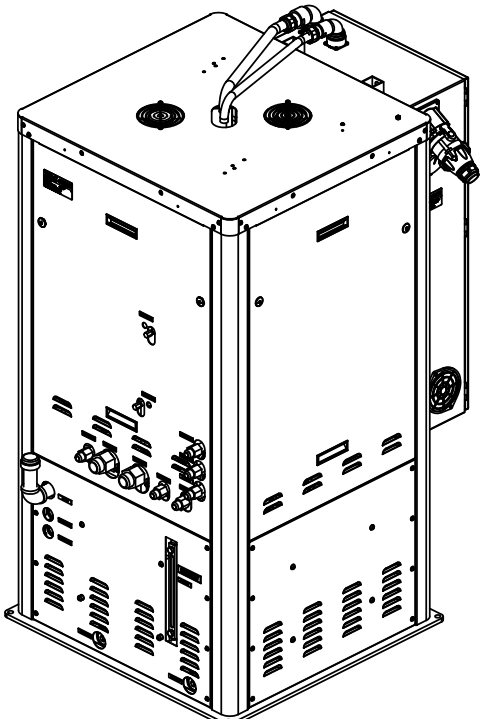
UNLESS OTHERWISE SPECIFIED DIMENSIONS ARE IN INCHES TOLERANCES ARE: FRACTIONS ± 1/64" ANGLES ± 30" X ± .5	CAD GENERATED DRAWING, DO NOT MANUALLY UPDATE		BURGI ENGINEERS, LLC KALISPELL, MONTANA 14/11 GPM DUAL SUPPLY, VACUUM RETURN, OIL RECIRCULATING SYSTEM
	APPROVALS	DATE	
KWHY WIDTH +.002 -.000	DRAWN	LRG	11/11/2011
	CHECKED	DPB	11/11/2011
	APPR	RCB	11/11/2011
PATTERN NUMBER: DO NOT SCALE DRAWING	MATERIAL: A9620007	SIZE: C	DWG. NO.: A9620007 SCALE 1:12 SHT 1 OF 3

THE INFORMATION CONTAINED IN THIS DRAWING IS THE SOLE PROPERTY OF BURGI ENGINEERS, LLC. ANY REPRODUCTION IN PART OR WHOLE WITHOUT THE WRITTEN PERMISSION OF BURGI ENGINEERS, LLC IS PROHIBITED.

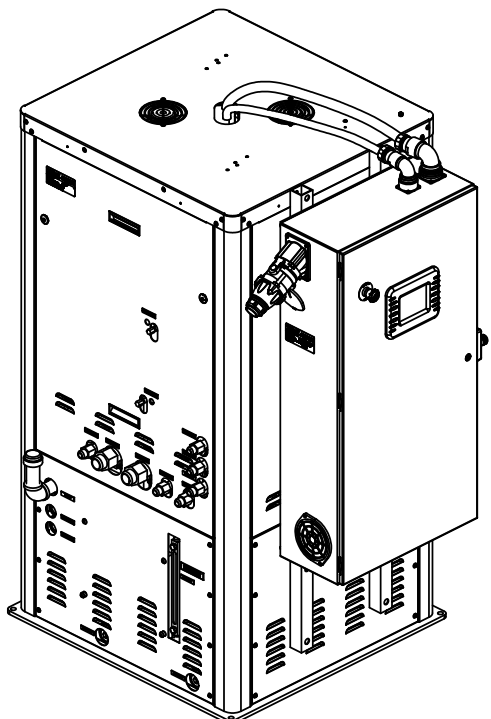
REV. NO.		REVISIONS	DATE	APPROVED



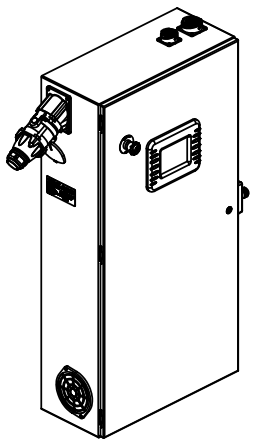
OPTION A CONTROL CABINET LOCATION



OPTION B CONTROL CABINET LOCATION



OPTION C CONTROL CABINET LOCATION



OPTION D CONTROL CABINET LOCATION REMOTE

PART # A9620007 SHOWN
APPROXIMATE WEIGHT IS 2290.466 LBS.

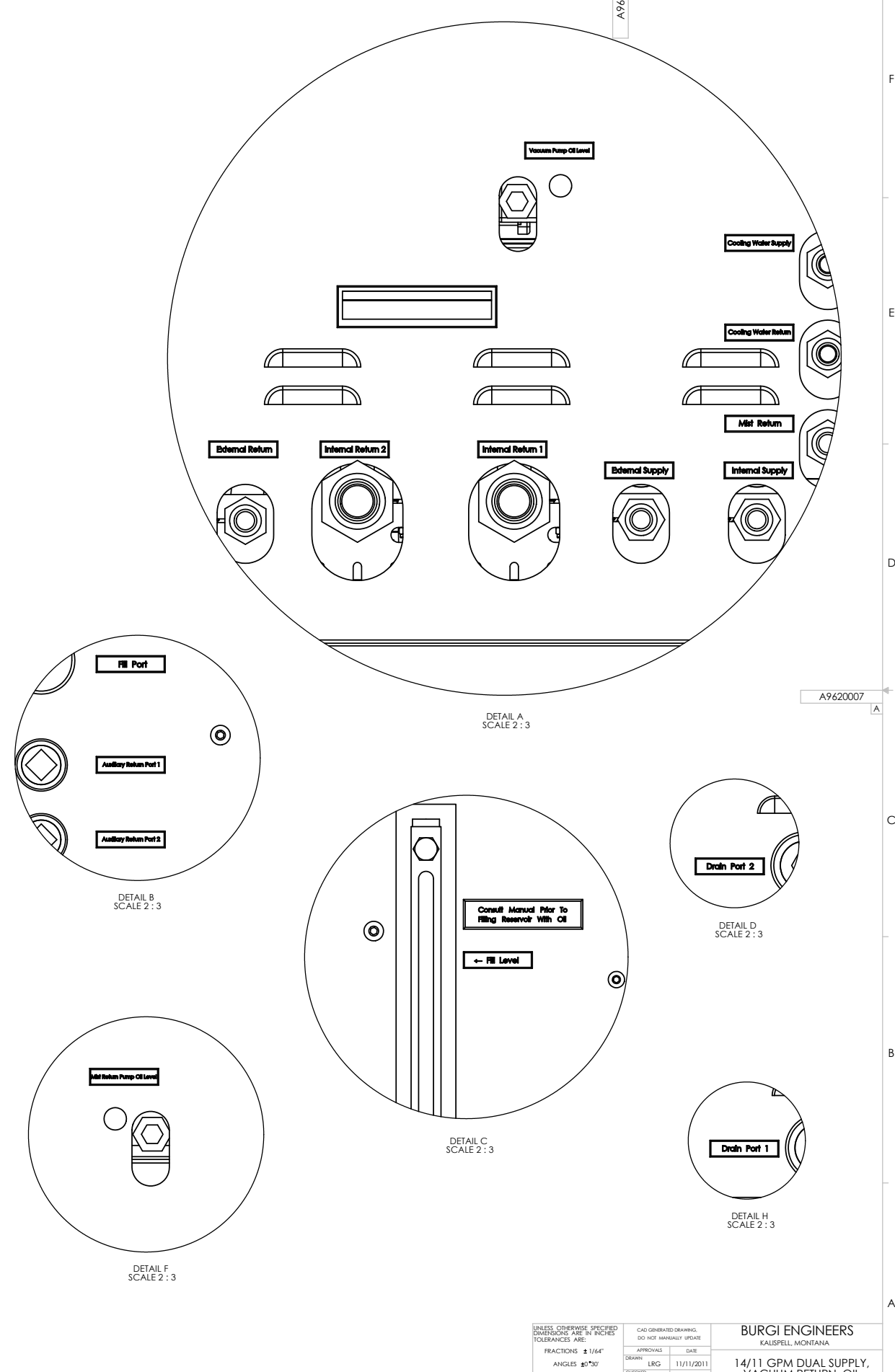
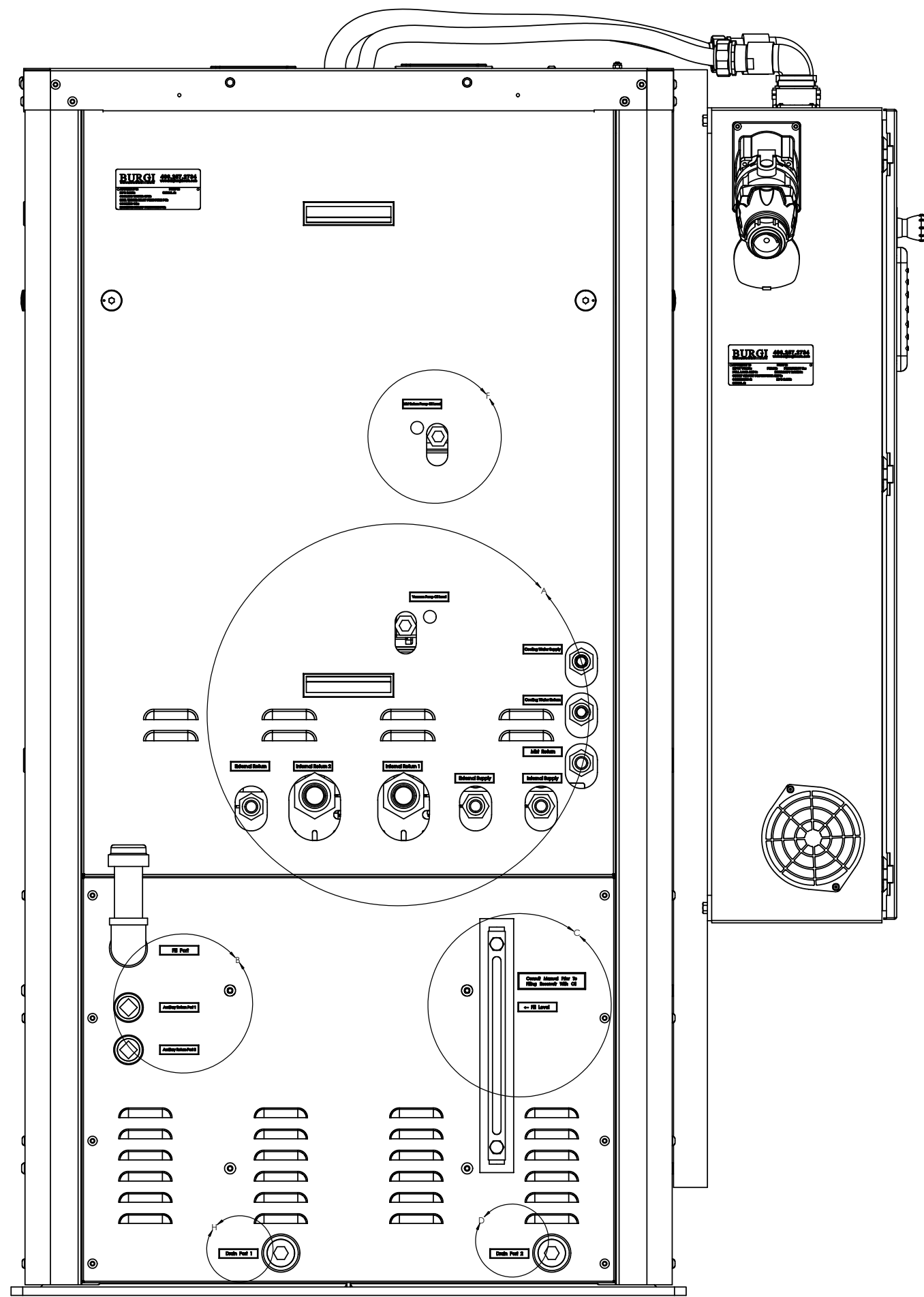
A9620007

A9620007

UNLESS OTHERWISE SPECIFIED DIMENSIONS ARE IN INCHES TOLERANCES ARE:		CAD GENERATED DRAWING. DO NOT MANUALLY UPDATE		BURGI ENGINEERS, LLC KALISPELL, MONTANA	
FRACTIONS ± 1/64"	APPROVALS	DATE	14/11 GPM DUAL SUPPLY, VACUUM RETURN, OIL RECIRCULATING SYSTEM		
ANGLES ± 0°30'	DRAWN	11/11/2011	REV. A		
.X ± .015	CHECKED	DPB 11/11/2011	SCALE 1:12 CAD FILE: SHT 2 OF 3		
.XX ± .010	APPR	RCB 11/11/2011			
.XXX ± .005	MATERIAL	SEE BOM			
KWY WIDTH +.002 -.000			SIZE DWG. NO.	A9620007	
PATTERN NUMBER: --			SCALE	1:12	
DO NOT SCALE DRAWING					

THE INFORMATION CONTAINED IN THIS DRAWING IS THE SOLE PROPERTY OF BURG ENGINEERS. ANY REPRODUCTION IN PART OR WHOLE WITHOUT THE WRITTEN PERMISSION OF BURG ENGINEERS IS PROHIBITED.

REVISIONS		DATE	APPROVED
ZONE	REV.	DESCRIPTION	



UNLESS OTHERWISE SPECIFIED DIMENSIONS ARE IN INCHES TOLERANCES ARE:	CAD GENERATED DRAWING. DO NOT MANUALLY UPDATE.	BURGI ENGINEERS KALISPELL, MONTANA
FRACTIONS $\pm 1/64"$	APPROVALS	DATE
ANGLES $\pm 30'$	DRAWN LRC	11/11/2011
X $\pm .015$	CHECKED DPB	11/11/2011
XX $\pm .010$	APPR RCB	11/11/2011
XXX $\pm .005$	MATERIAL	
KWY WIDTH $+0.002 -0.000$	SEE BOM	
DATE/NO. 11/11/2011	SCALE 1:2.5	CAD FILE
REV. A	SHT. 3 OF 3	